



HEMMINGS HOMES

OFFERS OVER

£150,000

Helmsdale Court

Glasgow, G72 7YR

PROPERTY SUMMARY

3



1



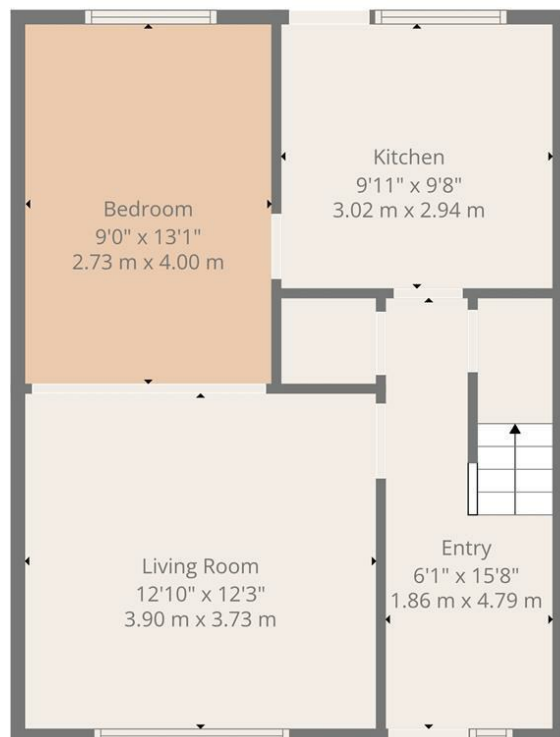
1



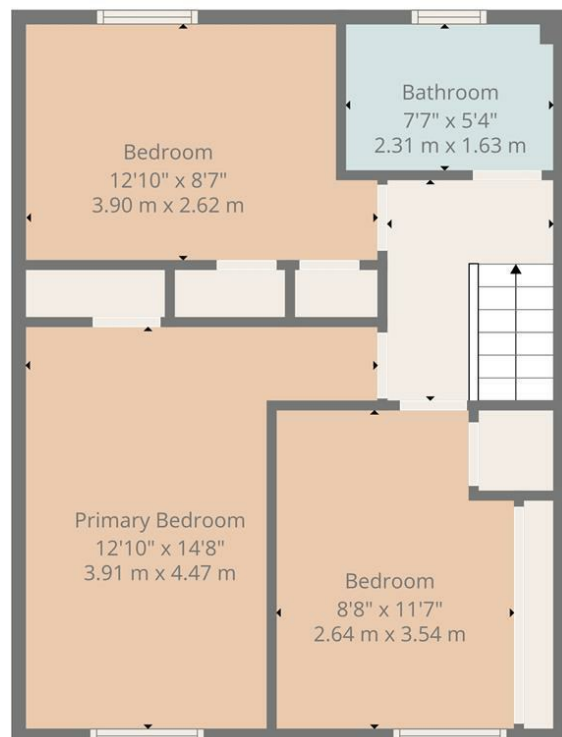








Ground Floor



1st Floor

LOCAL AUTHORITY

South Lanarkshire

TENURE

Freehold

COUNCIL TAX BAND

C

VIEWINGS

By prior appointment only

Energy Efficiency Rating		
	Current	Potential
Very energy efficient - lower running costs		
(92 plus) A		
(81-91) B		
(69-80) C		
(55-68) D		
(39-54) E		
(21-38) F		
(1-20) G		
Not energy efficient - higher running costs		
Scotland	76	81
	EU Directive 2002/91/EC	



TOTAL: 988 sq. ft, 92 m2
 Ground floor: 494 sq. ft, 46 m2, 1st floor: 494 sq. ft, 46 m2
 EXCLUDED AREAS: WALLS: 92 sq. ft, 8 m2

Floor Plan Created By Cubicasa App. Measurements Deemed Highly Reliable But Not Guaranteed.

Agents Note: Whilst every care has been taken to prepare these particulars, they are for guidance purposes only. All measurements are approximate and are for general guidance purposes only and whilst every care has been taken to ensure their accuracy, they should not be relied upon and potential buyers/tenants are advised to recheck the measurements



OFFICE ADDRESS

376 Brandon Street
 Motherwell
 North Lanarkshire
 ML1 1XA

OFFICE DETAILS

01698 263413
enquiries@hemmingshomes.co.uk
hemmingshomes.co.uk